

Contents Icon Extract



Blind Mellon Software

[Commands](#)

[License](#)

[Other Products](#)

[Registration benefits](#)

[Support Sites](#)

[Register](#)

Blind Mellon Software all rights reserved.

Commands Icon Extract

[Extract Icons](#)

[Options](#)

[Create DLLs](#)

[Contents](#)

[Register](#)

Blind Mellon Software all rights reserved.

Support Sites

We provide several locations for down loading the latest version of all of our software.

Internet World Wide Web:

<http://www.blindmellon.com/~blindmello>

Our Bulletin Board System.

1 702 233 9071, when you call you will first have to download the Excalibur(tm) terminal and then call back. [About Blind Mellon Circus](#)

Blind Mellon Software all rights reserved.

License



Icon Extract

Copyright (C) 1994, 95,96 Mike Owens, Blind Mellon Software.
All Rights Reserved

Ordering Information may be found in this help file.

License Agreement

The use of Icon Extract is subject to the following terms and conditions.

Title To The Licensed Software

Title to the licensed software is NOT transferred or sold to the end user. The end user is granted a nonexclusive license to use the software on a SINGLE computer or computer work station.

Copyright Protection

Icon Extract is copyrighted material. It is protected by the copyright laws of the United States.,

You may make copies of Icon Extract and distribute to your friends.

You may use Icon Extract on a thirty (30) day trial basis.

Limited Warranty

Mike Owens does not warrant that the licensed software will meet your requirements or that the operation of the software will be uninterrupted or error free. Mike Owens warrants that every effort to resolve problems of functionality or operation will be made to satisfy the registered customer. Problems resolved in the software will be resolved in the latest version that may be down loaded and registered by the user.

ANY IMPLIED WARRANTIES INCLUDING ANY WARRANTIES OF MERCHANTABILITY OR FITNESS FOR A PARTICULAR PURPOSE ARE LIMITED TO THE TERM OF THE EXPRESS WARRANTIES. Some States do not allow limitations on how long an implied warranty lasts, so the above limitation

may not apply to you.

Other Warranties

The warranties set forth above are in lieu of any and all other express or implied warranties, whether oral, written, or implied, and the remedies set forth above are the sole and exclusive remedies.

Limitation Of Liability

Mike Owens is not responsible nor liable in anyway for any problems or damage caused by the licensed software that may result from using the licensed software. This includes, but is not limited to, computer hardware, computer software, operating systems, and any computer or computing accessories. End user agrees to hold Mike Owens harmless for any problems arising from the use of this software.

Limited License To Copy The Software You are granted a limited license to copy and distribute Icon Extract No fee, charge or other compensation may be accepted or requested by anyone without the express written permission of Mike Owens.

Public Domain Disk Vendors May NOT CHARGE a fee for Icon Extract. However you may include Icon Extract on a diskette/CD-ROM for which you charge a nominal distribution fee. The purchaser of said diskette must be informed in advance that the fee paid to acquire the diskette does NOT relieve said purchaser from paying the Registration Fee for Icon Extract if said purchaser uses Icon Extract.

Operators of electronic bulletin board systems (Sysops) may post Icon Extract for down loading by their users without written permission A fee may be charged for access to the BBS AS LONG AS NO SPECIFIC FEE IS CHARGED FOR DOWN LOADING Icon Extract.

Evaluation and Registration

This is not free software. This license allows you to use this software for evaluation purposes without charge for a period of 30 days. If you use this software after the 30 day evaluation period a registration fee is required.

Contents

Blind Mellon Software all rights reserved.

Register

[Register with A Credit Card](#)

[Register by mail](#)

[Register on our web site](#)

[Call our bbs](#)

[Detail info on registering on compuserve](#)

[Contents](#)

Blind Mellon Software all rights reserved.



Extract Icons



Icon extract will read any executable file or windows icon dll file and allow you to extract and save your choice of icons. The above picture show a typical display of 48 icons found in a library or dll file. Select an icon by clicking once with your mouse and you will be prompted for filename to save the icon.

Blind Mellon Software all rights reserved.



Options

Create Bit maps

If you select the create bit maps option, the program will save the Icons in BMP or Bit map format.

Favorite directory

You may enter one favorite directory and each time you open a file the program will use this information to start the file open command.

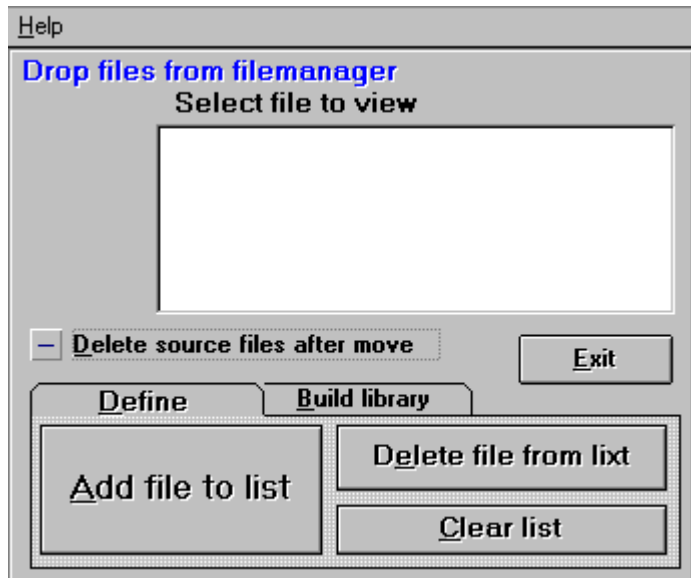
Stay on top

Select this option to make the screen stay on top of other applications.

Blind Mellon Software all rights reserved.



Create DLLs



You may enter files to be included into a new DLL Library in one of several ways,

1) you may select them one at a time with the add file button, 2) you may drag and drop entire lists of ICO files from the filemanager, Minimize the form and then select an Icon from your file manager display, drag it over to the icon and release it. You may select more than one file from the file manager by using the shift key to define the end of a list of files to drag and drop.

Filename for new library

You may name the file with any legal MSDOS filename, lib.DLL, lib.NIL, lib.ICL I recommend you use the DLL extension.

Drag and drop from file manager

When building icon libraries you may drag and drop from the file manager one or more files. Minimize the Icon Extract window and drop a list of files on it from the file manager window, using your mouse select files from the window, see

file manager help for more information on selection.

Blind Mellon Software all rights reserved.

